



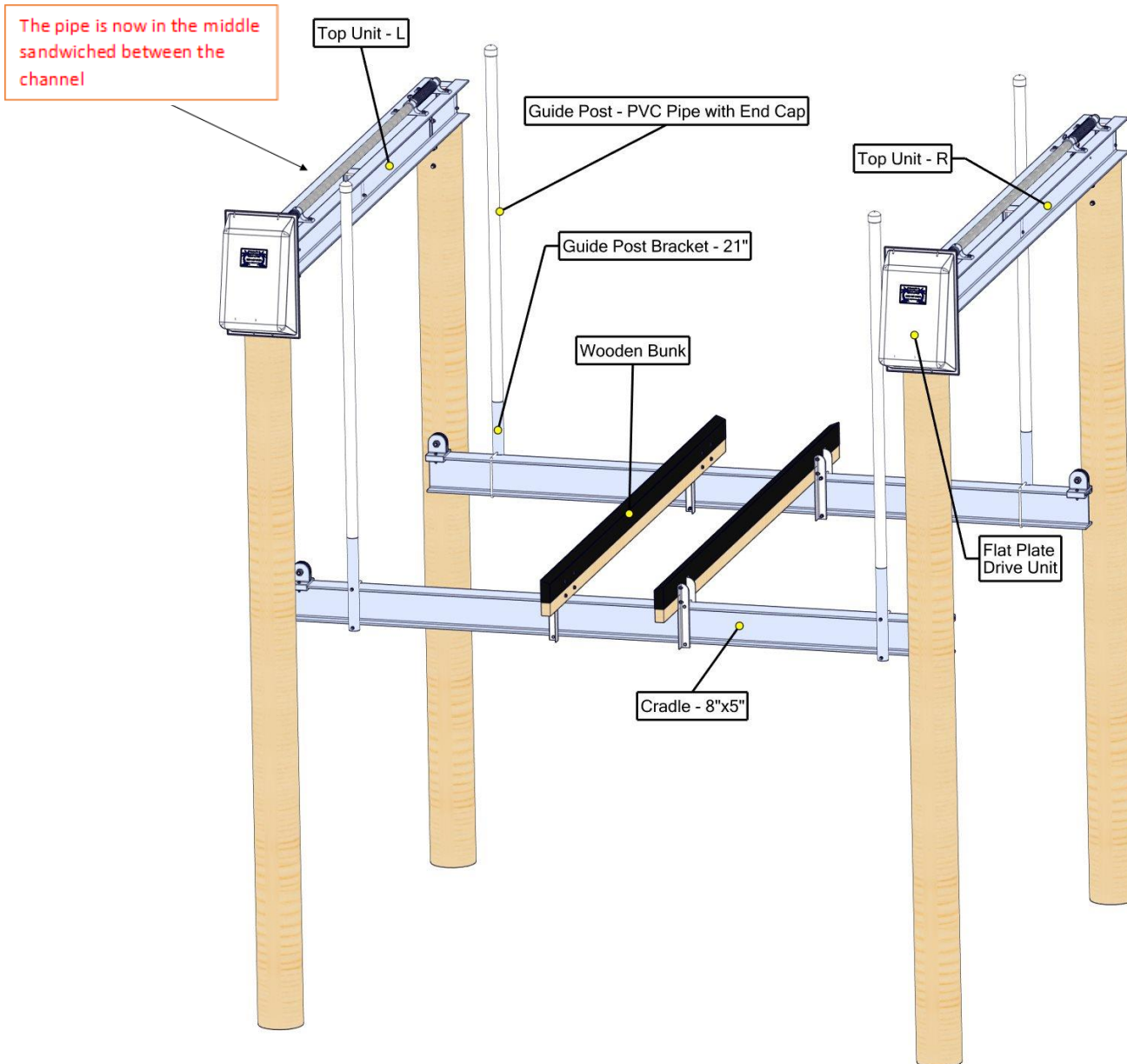
BOAT LIFT DISTRIBUTORS

Four Pole Top Mount Lift – Flat Plate Drive

Boat Lift Distributors

Installation Instructions: Four Pole Top Mount Lift

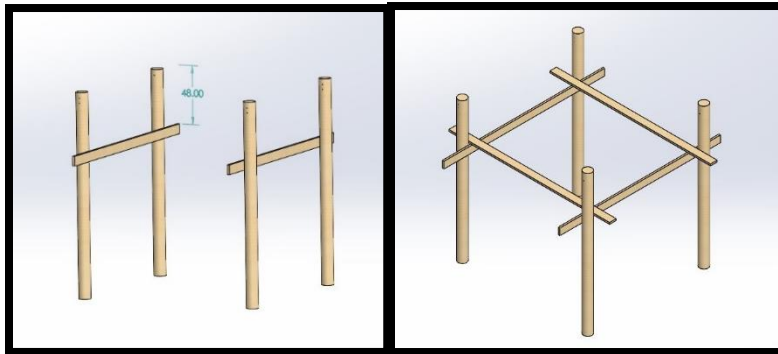
Thank you for your recent Boat Lift purchase. In the pages that follow, we will take you step-by-step through the entire installation sequence, including the lifting of the boat. Please read this manual entirely before attempting the installation. Failure to do so could result in serious injury or death.



Components List								
Top Unit	4k Flat Plate Drive Unit		Top Unit	Top Unit				
	Name	Qty.		Name	Qty.			
	Drive Unit - 4k Flat Plate	2		Pre-assembled top unit that includes the galvanized drive pipe, four bearings, and two cable winders with cable bolts installed	2			
	Drive Unit Cover - 4k Flat Plate	2		Drive Unit Spacer	2			
	Drive Pulley - 10"	2		1/2" Threaded Rod	8			
	Bottom Slide Plate with Pins	2		1/2"x1/2" Flat Washer	8			
	Motor - 1HP Painted, 56 Frame	2		1/2"x2" Flat Washer	8			
	Motor Pulley - 2"	2		1/2" Lock Washer	16			
	Top Washer with Pins	4		1/2" Hex Nut	16			
	Belt - 4L360 or Ax34	2		Cable Deadman Brackets				
	Carriage Bolt	8		Name	Qty.			
	Lock Washer - 5/16"	8		Square Washer	4			
	Hex Nut - 5/16"	8		3/4"x 2" Bolt	4			
	Hex Bolt - 1/2"x1-3/4"	4		Nylon Nut- 3/4"	4			
	Lock Nuts - 1/2"	4		Lock Washer - 3/4"	4			
	Flat Washers - 1/2"	4		Bunks - Wooden				
	Half Moon Pulley Cover	2		Name	Qty.			
	Half Moon Cover Hardware - (2) 1/4"x1" Hex Bolts, (2) 1/4" Nuts	2		Bunk Bracket - 14.5"	8			
Cradle	Cradle		Cradle	Name	Qty.			
	Name	Qty.				Bunk Bracket - 14.5"	8	
	Pre-Assembled Cradle Beam (12' 6") that includes the cradle ends with pulleys, grease bolts, and zincs installed	2				Flat Washer - 3/8"	16	
	Guide Posts					Hex Bolt - 3/8"x3"	16	
	Name	Qty.				Hex Nut - 3/8"	24	
	PVC (10ft) with Caps	4				Lock Washer - 3/8"	24	
	Galvanized Weight Pipe - 50"	4				Hex Bolt - 3/8"x6-1/2"	8	
	Guide Post Bracket - 21"	4				Wooden Bunks (Carpeted)	2	
	U-Bolt - 3/8"x8"	4						
	Hex Nut - 3/8"	8				Cable		Qty.
	Lock Washer - 3/8"	8				SS Cable - 5/16"x33'	4	
		T-brcket						
		T-brackets	4					
		1/2" x 2.5" bolt	8					
		1/2" lockwashers	8					
		1/2" nylon nuts	8					

STEP 1: SETTING OF TOP UNIT BEAMS

1. Scaffold four lift pilings.



Level and nail 2" x 8" x 16' boards approximately 4' down from top of pilings.

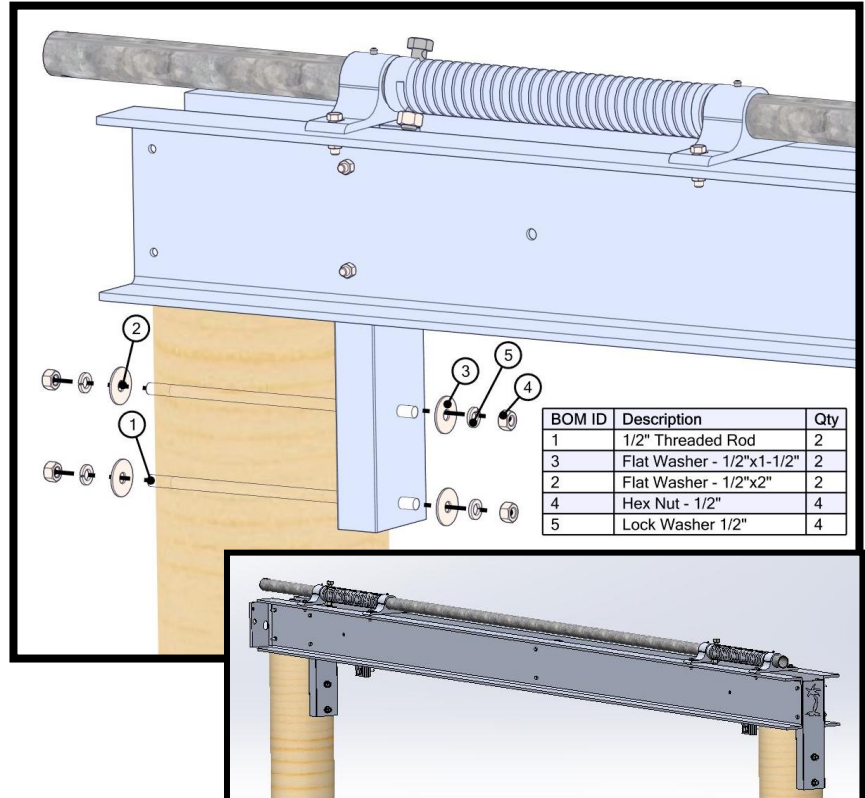
Then, place two more boards across the original boards as shown.

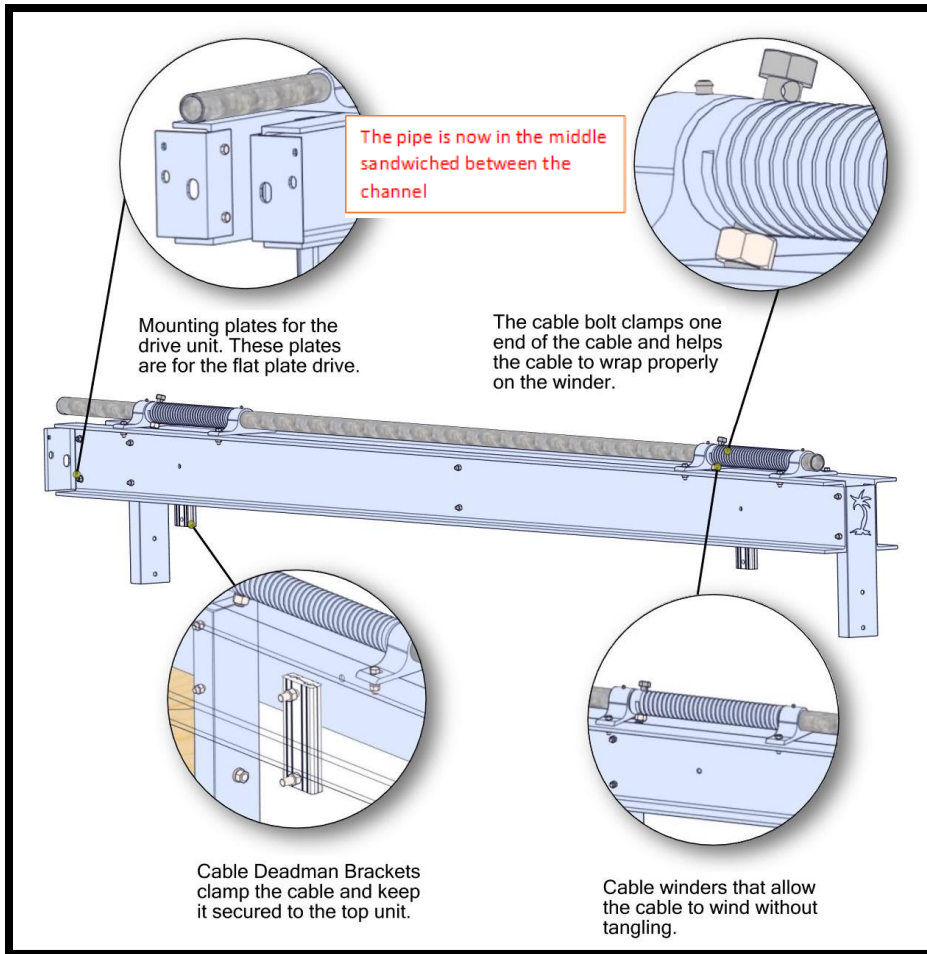
2. Measure the height of pilings off of the water. This measurement reading should be taken from the shortest piling.
3. Mark the remaining three pilings to the same height of the measurement completed in step 2. **NOTE:** Steps 2 & 3 should be completed quickly but accurately as the water tides move frequently. The water level also can be used instead of measuring if desired.
4. With a chain saw cut the four pilings to the same height. Use a 10" level to make sure the pilings tops are now level to allow a solid seating of top unit beams. **NOTE:** Place a rubber mat between the piling and the top units to act as an electrolysis isolator.
5. Top units are now ready to be set at the top of the leveled pilings. This will require two or more people. Position the drive ends towards the stern, and the stickers facing away from each other and place top units on top of the pilings.

6. Mount the T" brackets to head unit against. Place Head Unit on pilings. Attach legs to pilings then bolt legs to head unit with supplied hardware.

7. Drill 1/2" pilot hole through the piling and piling bracket. Insert the eight 1/2" x14" stainless steel rods, secure and tighten. (SEE FIGURE ON NEXT PAGE)

NOTE: Confirm that the top unit beams are level and square by checking to see if diagonal dimensions are equal. The lift must be within 3" of square to operate properly. If out of square more than 3" it may cause the cradle beams to drag against the pilings.



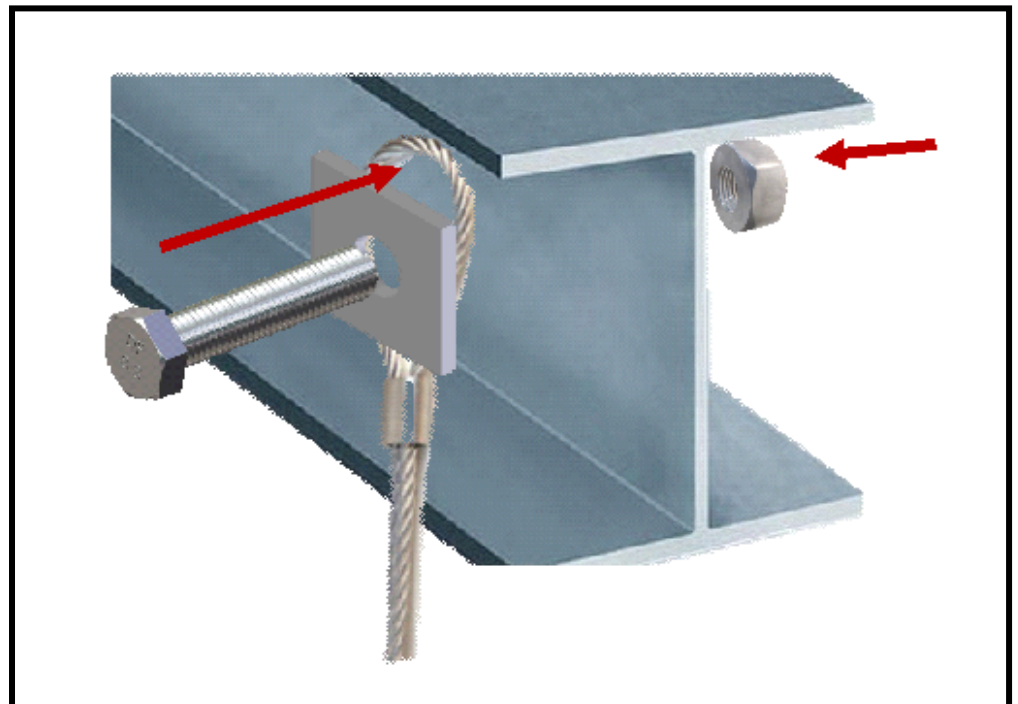


Top Unit Features

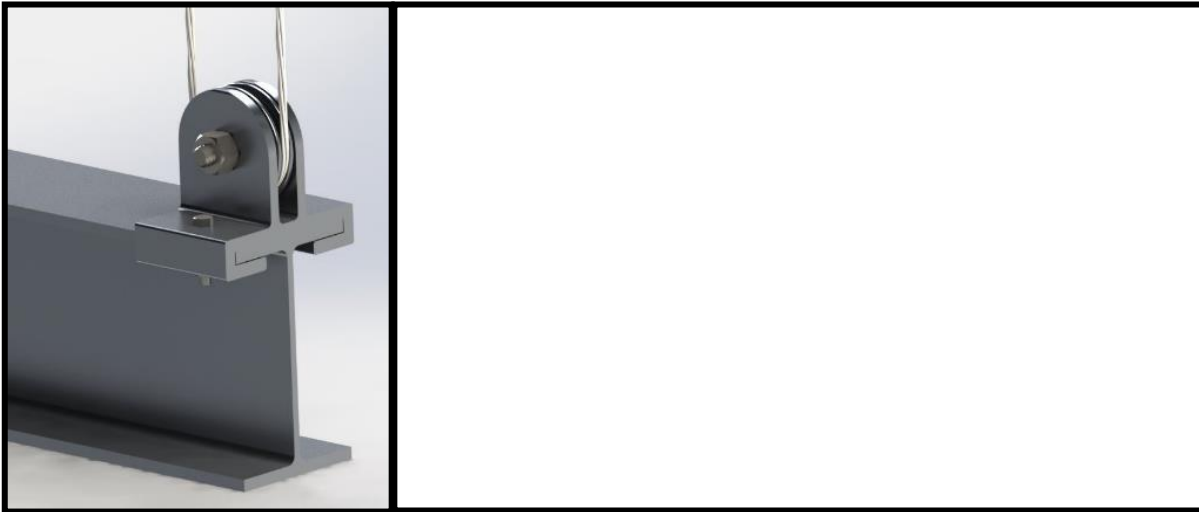
1. Holes are drilled in the i beam where the dead man is to be placed.

STEP 2: ATTACHING ALUMINUM CRADLE BEAMS

1. Make sure one end of each cable is installed in a deadman bracket as shown.



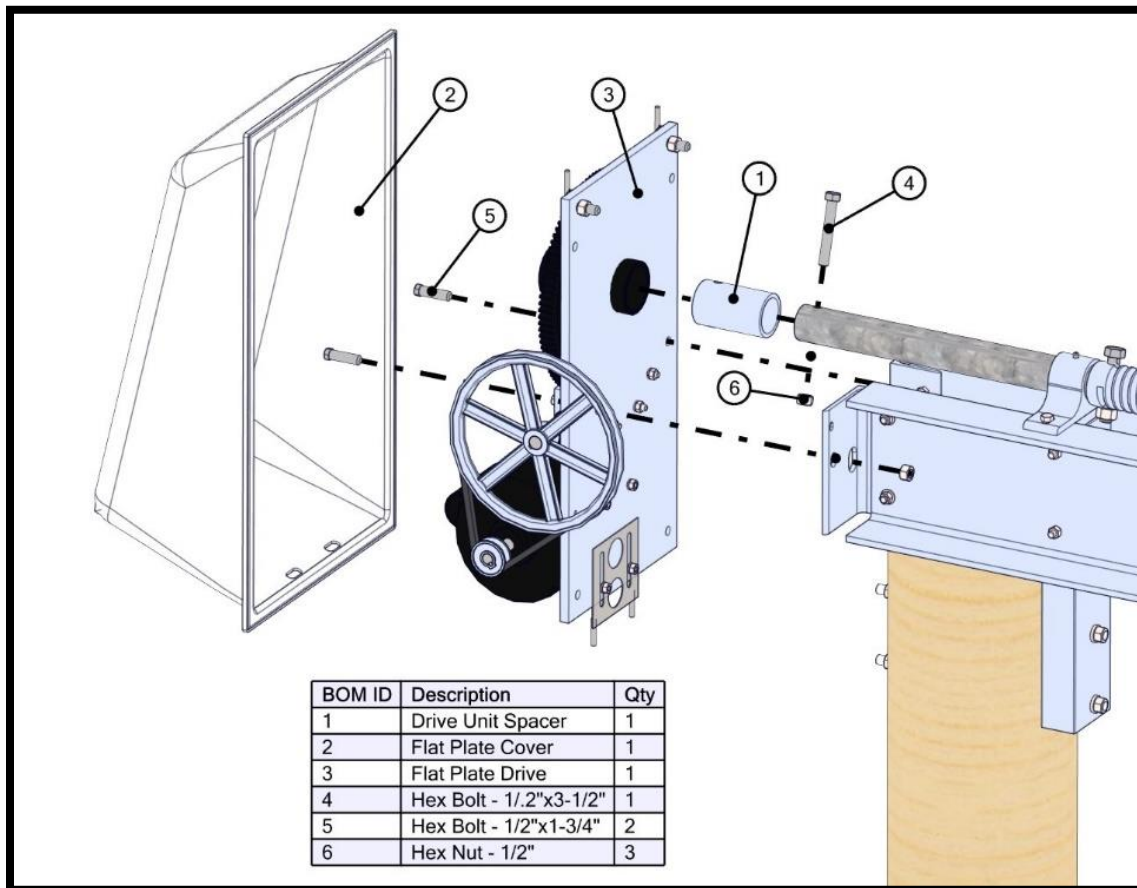
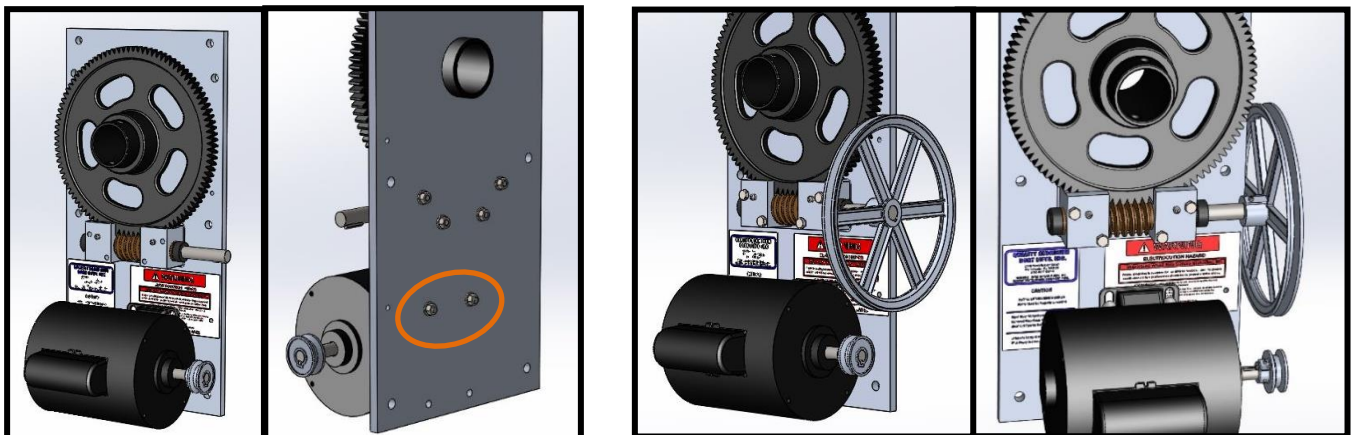
2. Attach the deadman (above) to the top unit using the already drilled holes and the provided hardware.
3. Place cradle beams into position onto ladder scaffold perpendicular to the top unit beams.



4. Take the free end of the cable and wrap it around each pulley in the top of the cradle arm. Bring the end back up to the cable winder.
5. Insert one end of the cable through the cable bolt hole and tighten the cable bolt until the cable is securely clamped to the cable winder.

NOTE:

1. The total length of the cable should allow for three full wraps of cable on the cable winder before top unit beam is carrying any load.
2. To assure good drainage from boat deck during storage of boat on lift, clamp the bow cables 4" shorter than the stern cables. This will give you 2" of pitch for deck drainage.

STEP 3: FLAT PLATE DRIVE UNIT INSTALLATION**Drive Unit Installation Overview****STEP 3: HEFTY HOIST MOTOR PLATE INSTALLATION (continued)**

1. Attach the motor to the back plate using the upper two mounting holes and provided carriage bolts.
2. Attach the 10" pulley to the hoist plate. Confirm the motor pulley and hoist pulley align.

